

980 Howe

© 2008 Joel Berman Design | www.joelberman.design | joel@joelberman.design



Visual Theme

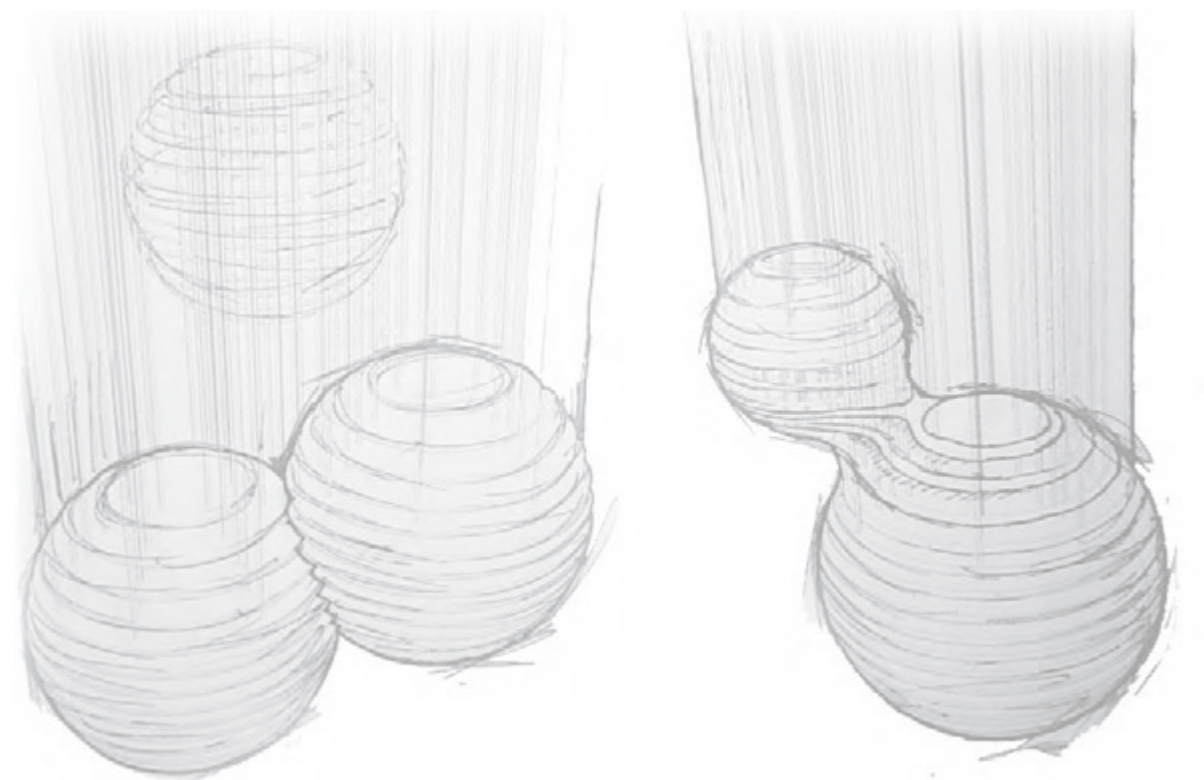
The initial concept is to make use of the buildings covered entry way in order to showcase a series of glass chandeliers: Exploring a process of stacking and suspending glass sheets to convey organic 3D forms ideal for playing with the medium of light. Layers of refraction and reflection are a staple building block of the Joel Berman sculpture projects.

Through brainstorming the site's location, geographically and architecturally, we decided to build the concept's over-arching aesthetic on the theme of rain.

Representations of rain drops within the sheltered environment of the building's entry-way offers an irony that brings some humour and light heartedness to a sophisticated piece of architectural lighting.

By creating forms which offered a macro view of water tension -investigating the mannerisms displayed when rain drops interact with surfaces and eachother- numerous variations are possible as we go into project development.

Engineered suspension systems suddenly become visual representations of motion-blurs, emulating a split second of a microscopic event, captured in time. Coloured treatments and internal light sources will surely make this an iconic piece of sculpture in downtown Vancouver.



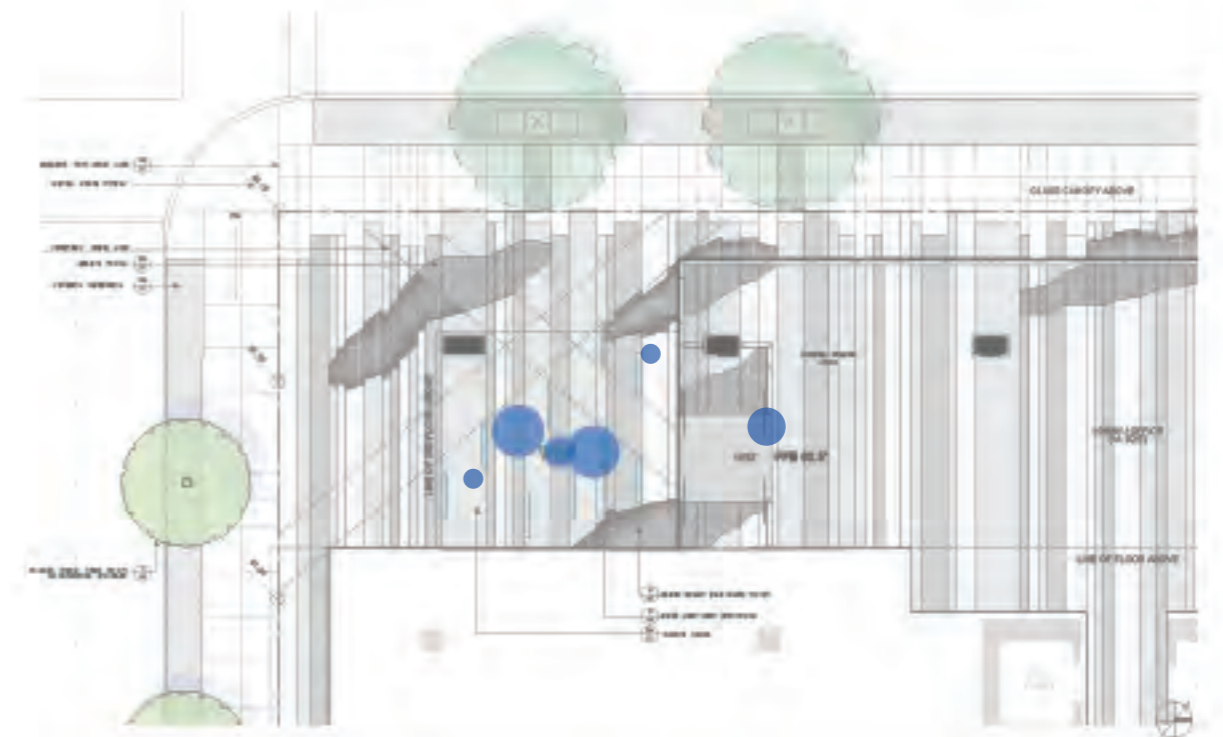


Existing Visual Cues

The spherical forms would be implied through the suspension of horizontal, parallel glass or acrylic discs.

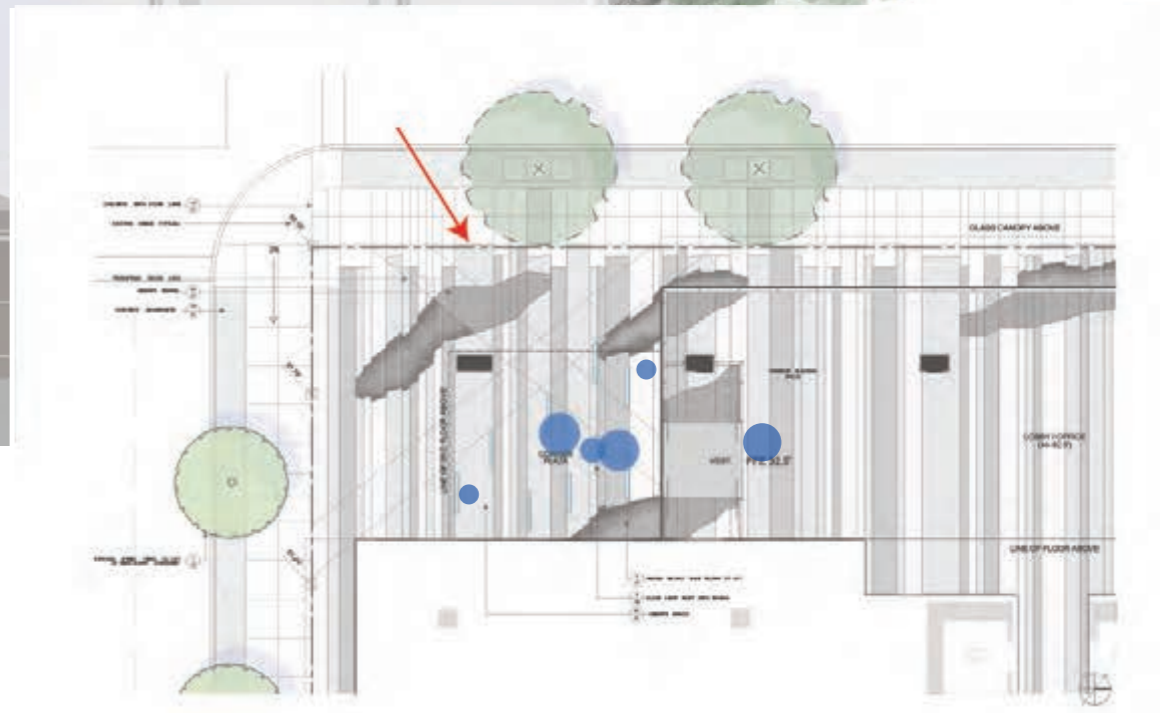
This visual language would not only offer an unexpected way of constructing an architectural sphere but would also speak the same language as the existing urban landscaping concept which uses off-set blocks to create the implied form of a rocky landscape, used as a seating system for the general public.

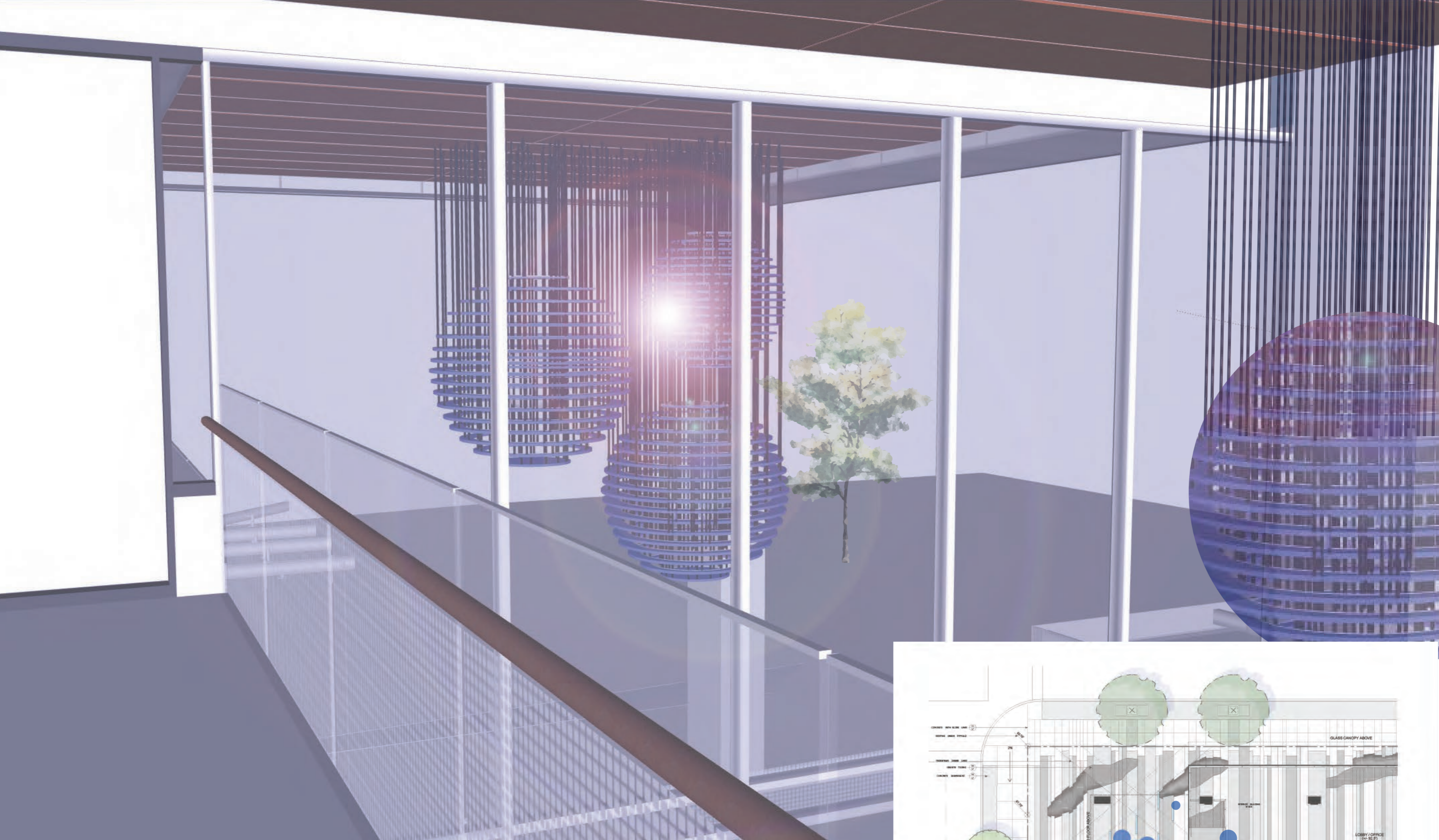
In this way, the two sculptures would talk to one another, creating a narrative of rain and water eroding and forming the natural landscape. We love collaboration!



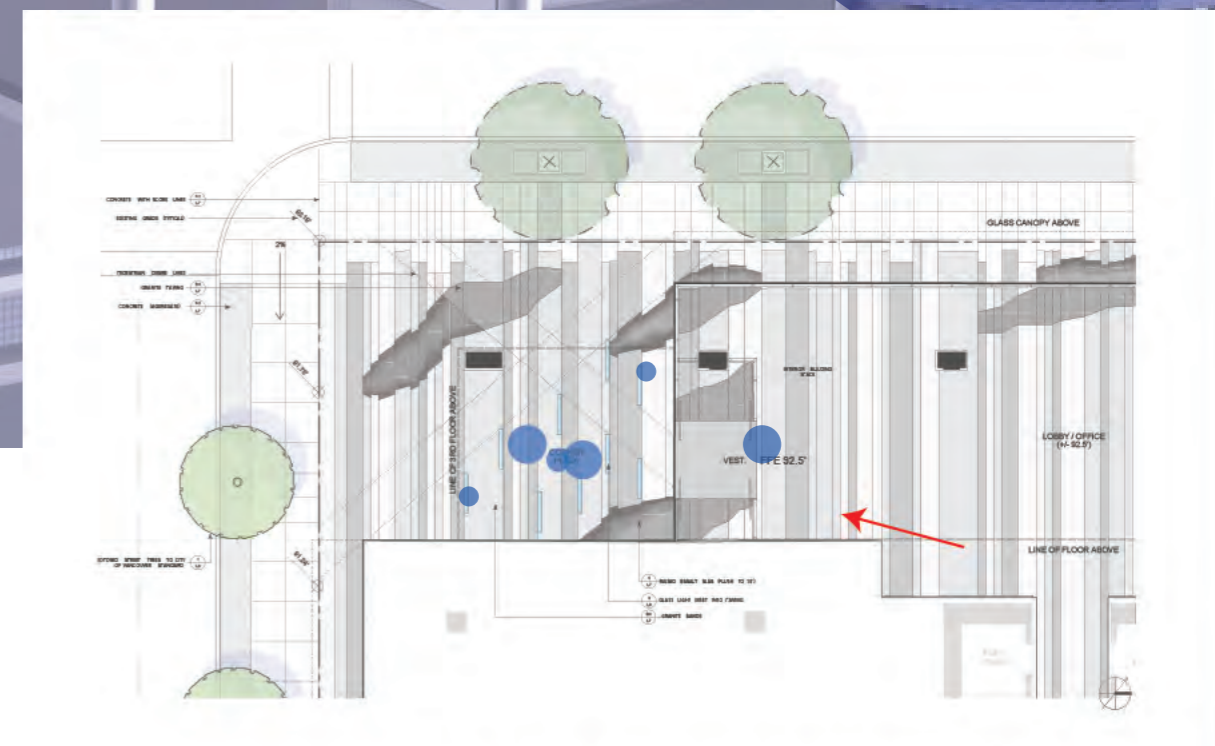


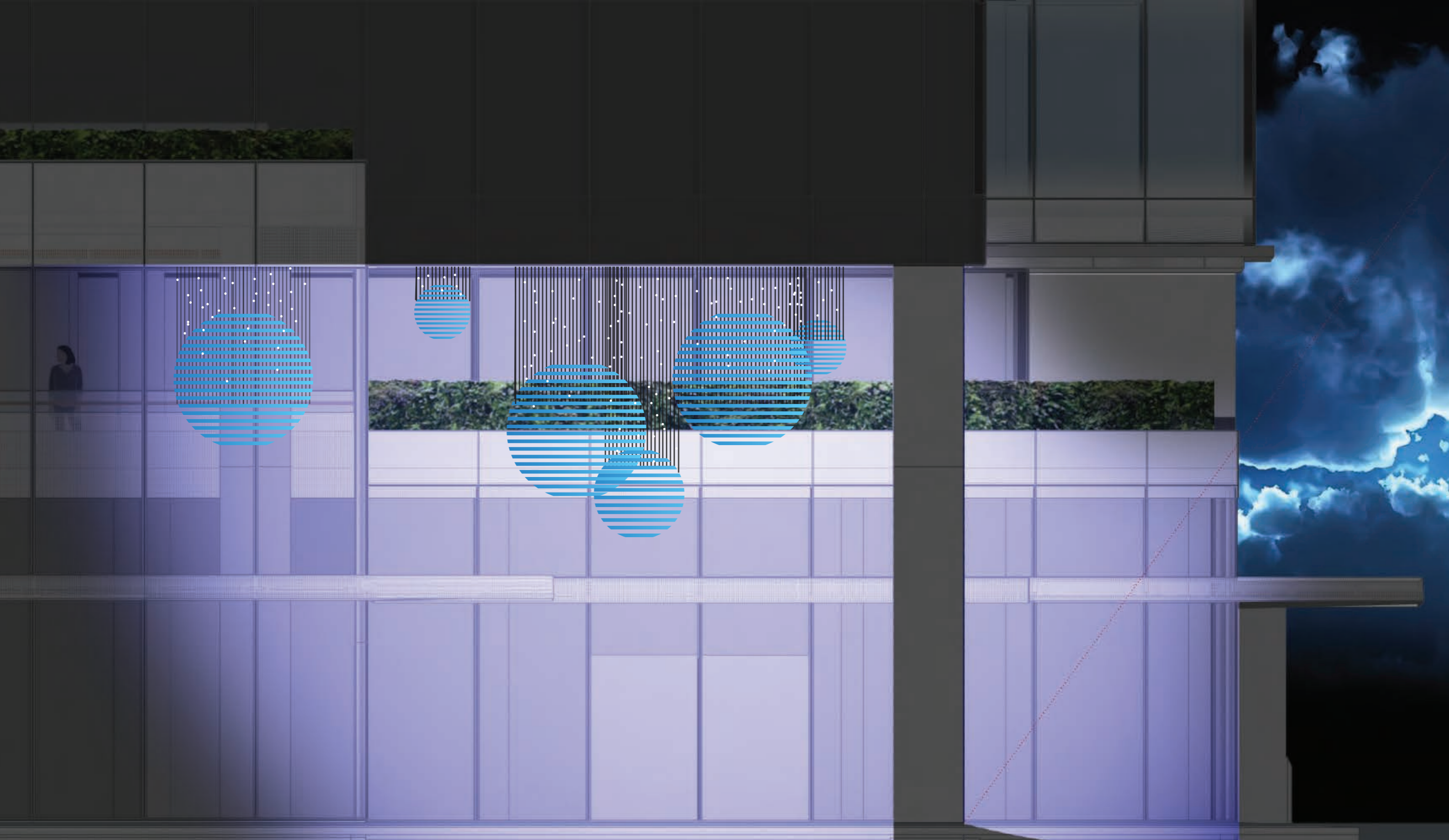
Perspective view from street



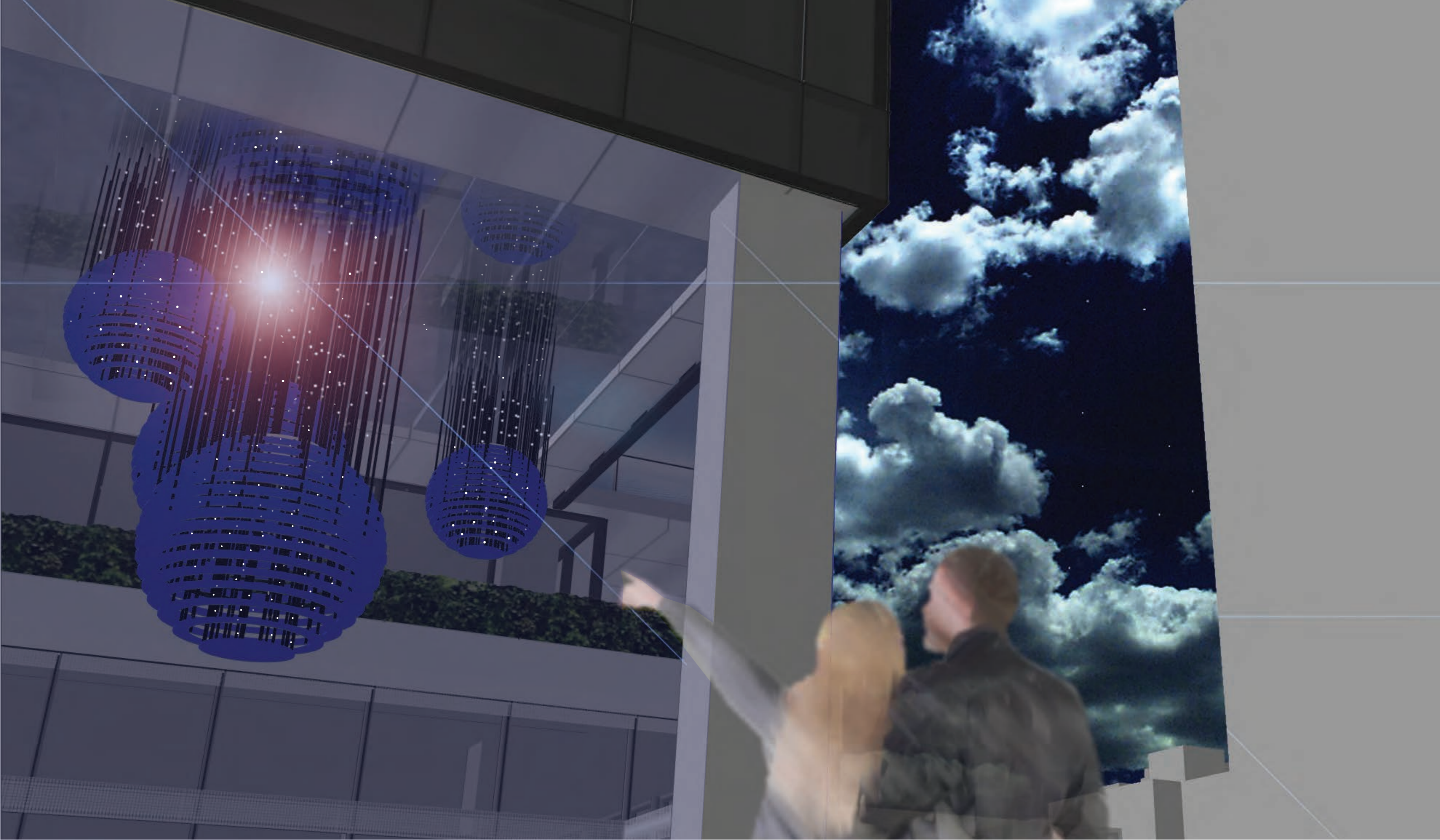


Perspective view from 1st floor atrium space balcony





Night time lighting



Night time lighting variation with mirrored ceiling and 'star light' suspended LEDs.



Edge Treatment

Adding a rough-cut or sandblasted internal edge to the rings is an option for creating visual interest and increasing the efficiency by which the material picks up light.

An undulating internal edge would also help to further convey the idea of water or theme of a landscape formed through erosion.

